

Baptism of Our Lord

January 10, 2021

PRELUDE

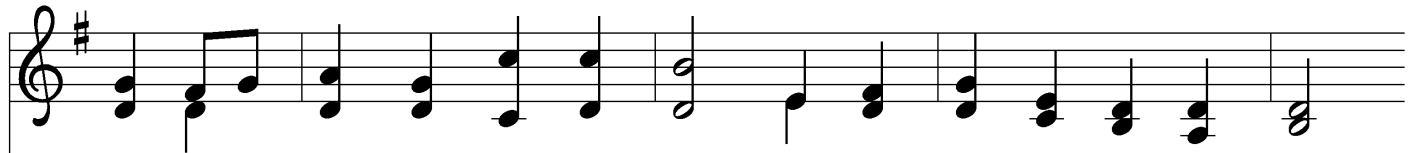
Beautiful Savior

PEETERS

HYMN

As with Gladness Men of Old

302



1 As with glad - ness men of old did the guid - ing star be - hold;
2 As with joy - ful steps they sped, Sav - ior, to thy low - ly bed,
3 As they of - fered gifts most rare at thy cra - dle, rude and bare,
4 Ho - ly Je - sus, ev - 'ry day keep us in the nar - row way;
5 In the heav'n - ly coun - try bright need they no cre - a - ted light;



as with joy they hailed its light, lead - ing on - ward, beam - ing bright;
there to bend the knee be - fore thee, whom heav'n and earth a - dore;
so may we with ho - ly joy, pure and free from sin's al - loy,
and when earth - ly things are past, bring our ran - somed souls at last
thou its light, its joy, its crown, thou its sun which goes not down;

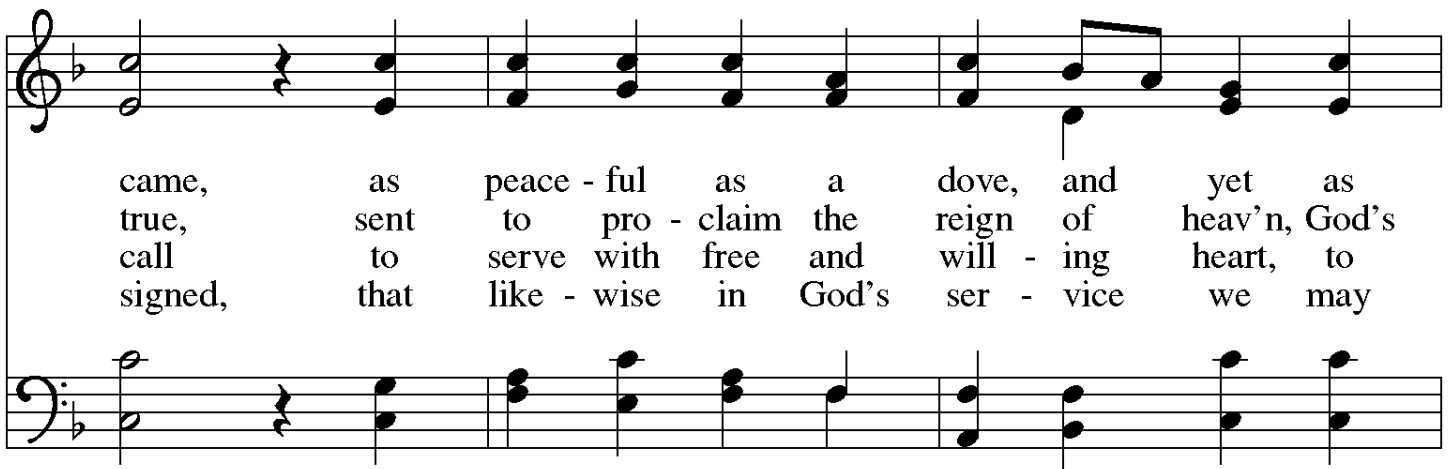


so, most gra - cious Lord, may we ev - er - more be led by thee.
so may we with will - ing feet ev - er seek thy mer - cy seat.
all our cost - liest trea - sures bring, Christ, to thee, our heav'n - ly king.
where they need no star to guide, where no clouds thy glo - ry hide.
there for - ev - er may we sing al - le - lu - ias to our king.

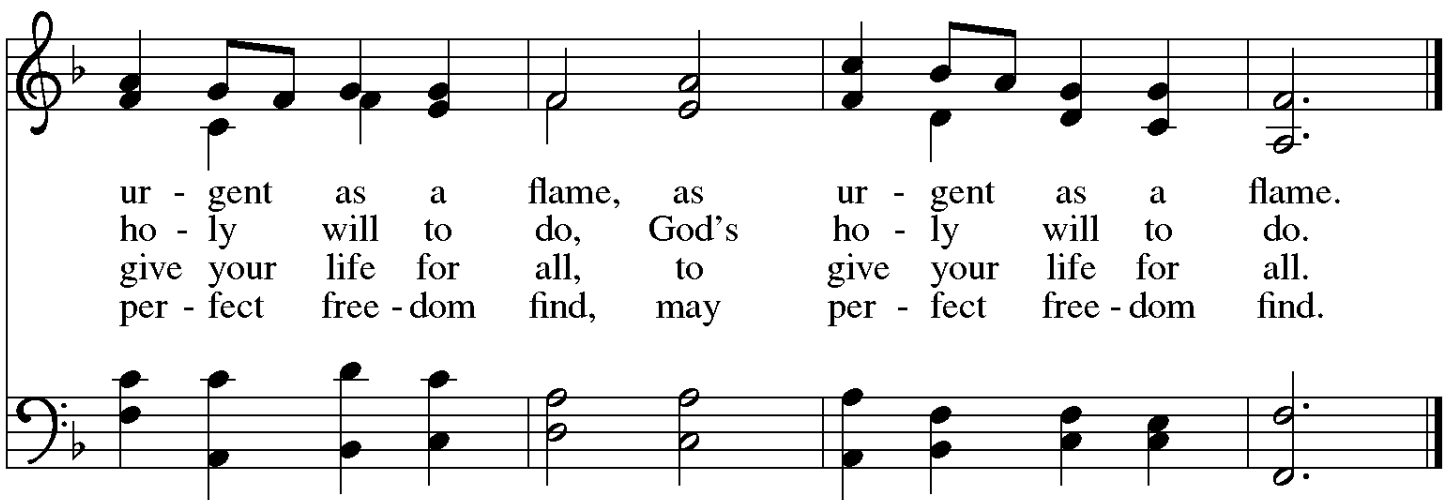




1 Christ, when for us you were bap - tized, God's Spir - it on you
 2 God called you, "My be - lov - ed Son"; you are God's ser - vant
 3 Straight - way and stead - fast un - til death you then o - beyed the
 4 Bap - tize us with your Spir - it, Lord; your cross on us be



came, as peace - ful as a dove, and yet as
 true, sent to pro - claim the reign of heav'n, God's
 call to serve with free and will - ing heart, to
 signed, that like - wise in God's ser - vice we may



ur - gent as a flame, as ur - gent as a flame.
 ho - ly will to do, God's ho - ly will to do.
 give your life for all, to give your life for all.
 per - fect free - dom find, may per - fect free - dom find.

1 Bright-est and best of the stars of the morn - ing,
 2 Cold on his cra - dle the dew - drops are shin - ing;
 3 What shall we give him, in cost - ly de - vo - tion?
 4 Vain - ly we of - fer each am - ple ob - la - tion,
 5 Bright-est and best of the stars of the morn - ing,

dawn on our dark - ness and lend us your aid.
 low lies his head with the beasts of the stall;
 Shall we bring in - cense and of - f'rings di - vine,
 vain - ly with gifts would his fa - vor se - cure;
 dawn on our dark - ness and lend us your aid.

Star of the east, the ho - ri - zon a - dorn - ing,
 an - gels a - dore him in slum - ber re - clin - ing,
 gems of the moun - tain and pearls of the o - cean,
 rich - er by far is the heart's ad - o - ra - tion,
 Star of the east, the ho - ri - zon a - dorn - ing,

guide where our in - fant re - deem - er is laid.
 mak - er and mon - arch and sav - ior of all.
 myrrh from the for - est or gold from the mine?
 dear - er to God are the prayers of the poor.
 guide where our in - fant re - deem - er is laid.

The most beautiful flower of all...the blossom of hope for those in need! In lieu of flowers today, the Hanflands offer a basket of much-needed non-perishable foods and a monetary donation to "God's Helping Hand" to the glory of God and in honor of our grandchildren, Charlotte and Graham Skinner

The Lutheran Men of Our Saviour will meet following worship on January 17th to discuss plans for the year.

The 2020 Constitution Policies and Procedures Book may be picked up from the basket on the table in the Cameron Hall. Please take no more than you need.

Contribution Statements for 2020 are available for pick-up on the table in the Cameron Hallway.



Our Saviour is a dedicated congregation and we are truly thankful for your service. For those who have volunteered to collect offering or serve as tellers during 2021, the Stewardship Team is offering a 45 minute training session Thursday, January 14 at 6:00 pm in the Fellowship Hall. Training will focus on consistency in following established procedures and maintaining accuracy in counting and documenting monetary contributions. Masks will be required and social distancing will be observed. Linda Griffith and Beth Cleland will be available for individual questions or concerns following the session. Attendance is not required; however, those who are new to the system are encouraged to do so. Please contact Linda or Beth if you are unable to attend.

Thank you to all the volunteers for 2021:

Offering Pick Up Volunteers: Horace Meetze, Beth Cleland, David Griffith, Gail Marcum, Meredith Cleland, Isma Boland, Mark Satterwhite, Jim Garner, Barney Keitt, Wayne Lybrand, Bill Aull

Tellers: Linda Griffith, Bill Aull, Horace Meetze, Pam Hanfland, Beth Cleland, Barney Keitt, Melodie Capole, Sylvia Ford, Theresa Garner, Gail Marcum

Those on our **Prayer list** below have special prayer needs at this time. We keep the entire congregation in our prayers at all times, but sometimes special prayers are needed. If your name is on the list or you have added someone's name and they no longer need to be on the list, please contact the church office so the name can be removed. Names on the prayer list are left on for two months, but may be extended upon request.

Carson Ayers
(great nephew of Elizabeth Shealy)
The family of Anne Ballinger
(cousin of Ruth Nicholson)
Inez Black
Isma Boland
Greg Chapman
Jeannie Chapman
Linda Crapps
Don Ford
Bill Hill
Dolores Hopkins

Patsy Horton
Elizabeth Davis Loman
(friend of the Keitts)
Anne Moyer
Mary Riddle
(sister of Jeannie Chapman)
Willette Satterwhite
Marie Shealy
(Morningside Ret Ctr., Apt. 131)
Mary Stocker
Jane Wallace

| OFFERING | <u>Total for January to Date</u> |
|--|---|
| General | \$3,505.00 |
| Building Maintenance & Property Improvement | \$ 495.00 |

| <u>SERVERS</u> | <u>TODAY</u> | <u>NEXT WEEK</u> |
|------------------------|---|---|
| <i>Greeters</i> | <i>*Need Volunteer</i> | <i>*Need Volunteer</i> |
| <i>Worship</i> | <i>Isma Boland</i> | <i>*Need Volunteer</i> |
| <i>Lector</i> | <i>*Need Volunteer</i> | <i>Ruth Nicholson</i> |
| | <u>JANUARY</u> | <u>FEBRUARY</u> |
| <i>Ushers</i> | <i>Linda Griffith Chief</i> | <i>Mark Satterwhite, Chief</i> |
| | <i>*Need Volunteer</i> | <i>Gary Black</i> |
| <i>Tellers</i> | <i>Linda Griffith &</i> <i>Bill Aull</i> | <i>Horace Meetze &</i> <i>Pam Hanfland</i> |
| <i>Offering Pickup</i> | <i>Linda Griffith</i> | <i>Horace Meetze</i> |
| <i>Property</i> | <i>Bill Aull</i> | <i>Gary Black</i> |
| <i>Altar Guild</i> | <i>Beverly Nivens &</i> <i>Kelly Heid</i> | <i>Wayne & Marie Lybrand</i> |