

Third Sunday of Easter

April 18, 2021

PRELUDE

Adagio in a minor

BACH

HYMN

Now the Green Blade Rises

ELW 379



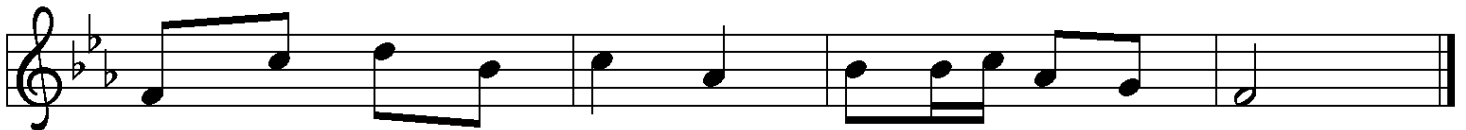
1 Now the green blade ris - es from the bur - ied grain,
2 In the grave they laid him, love by ha - tred slain,
3 Forth he came at Eas - ter like the ris - en grain,
4 When our hearts are win - try, griev - ing, or in pain,



wheat that in dark earth man - y days has lain;
think - ing that he would nev - er wake a - gain,
he that for three days in the grave had lain;
your touch can call us back to life a - gain,



love lives a - gain, that with the dead has been;
laid in the earth like grain that sleeps un - seen;
raised from the dead, my liv - ing Lord is seen;
fields of our hearts that dead and bare have been;



love is come a - gain like wheat a - ris - ing green.

1 Beau - ti - ful Sav - ior, King of cre - a - tion,
 2 Fair are the mead - ows, fair are the wood - lands,
 3 Fair is the sun - shine, fair is the moon - light,
 4 Beau - ti - ful Sav - ior, Lord of the na - tions,

Son of God and Son of Man!
 robed in flow'rs of bloom - ing spring;
 bright the spar - kling stars on high;
 Son of God and Son of Man!

Tru - ly I'd love thee, tru - ly I'd serve thee,
 Je - sus is fair - er, Je - sus is pur - er,
 Je - sus shines bright - er, Je - sus shines pur - er
 Glo - ry and hon - or, praise, ad - o - ra - tion,

light of my soul, my joy, my crown.
 he makes our sor - rowing spir - it sing.
 than all the an - gels in the sky.
 now and for - ev - er - more be thine!

1 Al - le - lu - ia! Sing to Je - sus; his the scep - ter,
 2 Al - le - lu - ia! Not as or - phans are we left in
 3 Al - le - lu - ia! Bread of heav - en, here on earth our
 4 Al - le - lu - ia! King e - ter - nal, Lord om - nip - o -
 5 Al - le - lu - ia! Sing to Je - sus; his the scep - ter,

his the throne; Al - le - lu - ia! his the tri - umph, his the
 sor - row now; Al - le - lu - ia! he is near us; faith be -
 food, our stay; Al - le - lu - ia! here the sin - ful flee to
 tent we own; Al - le - lu - ia! born of Mar - y, earth your
 his the throne; Al - le - lu - ia! his the tri - umph, his the

vic - to - ry a - lone. Hark! The songs of peace - ful
 lives, nor ques - tions how. Though the cloud from sight re -
 you from day to day. In - ter - ces - sor, friend of
 foot - stool, heav'n your throne. As with - in the veil you
 vic - to - ry a - lone. Hark! The songs of peace - ful

Zi - on thun - der like a might - y flood: "Je - sus
 ceived him when the for - ty days were o'er, shall our
 sin - ners, earth's re - deem - er, hear our plea where the
 en - tered, robed in flesh, our great high priest, here on
 Zi - on thun - der like a might - y flood: "Je - sus

out of ev - 'ry na - tion has re - deemed us by his blood."
 hearts for - get his prom - ise: "I am with you ev - er - more?"
 songs of all the sin - less sweep a - cross the crys - tal sea.
 earth both priest and vic - tim in the eu - cha - ris - tic feast.
 out of ev - 'ry na - tion has re - deemed us by his blood."

<i>Sunday</i>	10:30 am	Holy Communion
<i>(Apr 18)</i>	11:30 am	Lutheran Men
	11:30 am	Council Meeting
Tuesday	6:00 pm	Joint OSLC-WELCA Mtg.
<i>Sunday</i>	10:30 am	Holy Communion
<i>(Apr 28)</i>	10:30 am	Newberry College Sunday

The flowers are given in honor of our granddaughter, Sydney Griffith, who will graduate on May 8th from USC College of Nursing #1 in her class by David and Linda Griffith.

There will be a **Joint WELCA Meeting** this Tuesday in the Fellowship Hall at 6 pm. Circles are reminded to have members present. Masks and social distancing will be in effect. Lydia Circle will have devotions and Cameron Circle will provide refreshments. Please bring all reports in writing.

Lutheran Men in Mission will have a short meeting today after the worship service.

God's Helping Hands current needs are for dry and canned milk. Please place donations in the provided box in the Cameron Hallway.

2021 COMMUNITY PROJECT. The Lydia Circle is responsible for offering a congregational outreach service project for 2021. Due to the devastation that Covid-19 has caused for many in our own community, we have chosen to support God's Helping Hands to offer support for those in dire need of assistance due to lost jobs. Many have been terminated from their employment or had to terminate their employment to remain home with children not going to school. There is especially a need for assistance with rent/housing payments to help prevent possible eviction. Lydia is collecting monetary contributions for "Project Rent" to assist our area families. If you know of someone in particular that needs immediate help, please contact Marie Lybrand at 803-397-0503. We are also reaching out to Thrivent to request their \$250 gift contribution.

God's Helping Hands has also informed us that they are in need of new or gently used blankets. There is a box in the Narthex for your blanket donations. However, a monetary contribution can be made at anytime until April 30th.

If you would like to make a contribution to Project Rent, please make your check payable to OSLC-WELCA and mail or drop it off at the Church drop box. Please mark the envelope for WELCA--Project Rent. Should you have any questions or would like further information, please contact Marie Lybrand or Beverly Nivens.

First Quarter Financial Statements are available for pick up in the Cameron Hallway.

OFFERING	<u>Last Sunday</u>	<u>Total for April</u>
General	\$2,300.00	\$7,731.00
Building Maintenance & Property Improvement	\$ 550.00	\$ 985.00

SERVERS			
		<u>Today</u>	<u>Next Week</u>
<i>Greeters</i>	<i>Gary & Kay Black</i>	<i>*Need Volunteer</i>
<i>Lector</i>	<i>Wayne Lybrand</i>	<i>*Need Volunteer</i>
<i>Worship</i>	<i>*Need Volunteer</i>	<i>*Need Volunteer</i>
		<u>APRIL</u>	<u>MAY</u>
<i>Ushers (Chief)</i>	<i>Gail Marcum</i>	<i>*Need Volunteer</i>
		<i>Isma Boland</i>	<i>*Need Volunteer</i>
<i>Tellers</i>	<i>Beth Cleland & Melodie Capole</i>	<i>Linda Griffith & Sylvia Ford</i>
<i>Offering Pickup</i>	<i>Linda Griffith</i>	<i>David Griffith</i>
<i>Property</i>	<i>Barney Keitt</i>	<i>Mark Satterwhite</i>
<i>Altar Guild</i>	<i>Gail Marcum & Marie Lybrand</i>	<i>*Need Volunteer</i>

Those on our **Prayer list** below have special prayer needs at this time. We keep the entire congregation in our prayers at all times, but sometimes special prayers are needed. If your name is on the list or you have added someone's name and they no longer need to be on the list, please contact the church office so the name can be removed. Names on the prayer list are left on for two months, but may be extended upon request.

Inez Black

Greg Chapman

Jeannie Chapman

Linda Crapps

Don Ford

Bill Hill

Dolores Hopkins

Jonas Miles

(neighbor of the Keitts)

Anne Moye

Willette Satterwhite

Marie Shealy

(Morningside Ret Ctr., Apt. 131)

The family of Danny Stocker

Mary Stocker

DeLeon Wallace

Jane Wallace